

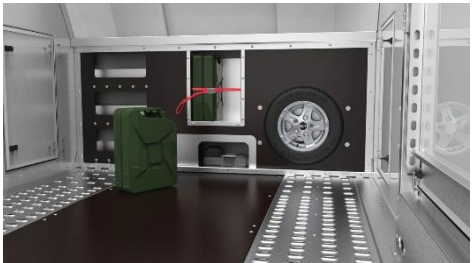
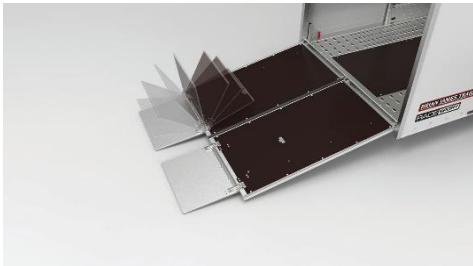
Coastmac

TRAILERS

MODEL: Race Sport Car Transporter

BRIAN JAMES TRAILERS

NO ELECTRIC BRAKES REQUIRED



- TARE – 1,080Kg
- Deck space – 5m x 2m
- Gullwing Doors
- Mechanical Drum Brakes
- Daylight Roof
- Twin Rear Ramp System
- Rear Stabilizer Legs
- ALKO Independent Rubber Suspension
- Multiple Tie Down Point
- New Tyres (spare included)
- H/D Jockey Wheel
- Licensed*
- **5 Year Chassis Warranty**

OPTIONAL EXTRAS

- Race Sport Electric Winch (340W-0001) - \$820 inc GST
- Race Sport Front Storage (340B-0001) - \$260 inc GST
- 12" Alloy Wheels inc. Spare (000Y-2002) - \$760 inc GST

2,600Kg ATM Rated (340-5000)

- Carrying Capacity – 1,520Kg

\$23,990 inc GST

3,000Kg ATM Rated (340-5010)

- Carrying Capacity – 1,920Kg

\$24,990 inc GST

*WA only- Stamp duty and transfer payable

Specifications and pricing may change without notice



COASTAL MACHINERY PTY LTD

HEAD OFFICE / BUNBURY

334 South Western Hwy,
Picton WA 6229
PH: (08) 9726 2276
FAX: (08) 9726 2286

WELSHPOOL

1/145 Welshpool Rd,
Welshpool WA 6106
PH: (08) 9493 2276
FAX: (08) 9493 2286

WANGARA

1/18 Distinction Rd,
Wangara WA 6065
PH: (08) 6305 0860
FAX: (08) 6305 0876

info@coastmactrailers.com.au welshpool@coastmactrailers.com.au wangara@coastmactrailers.com.au

Postal Address: PO Box A304 Australind 6233

www.coastmactrailers.com.au